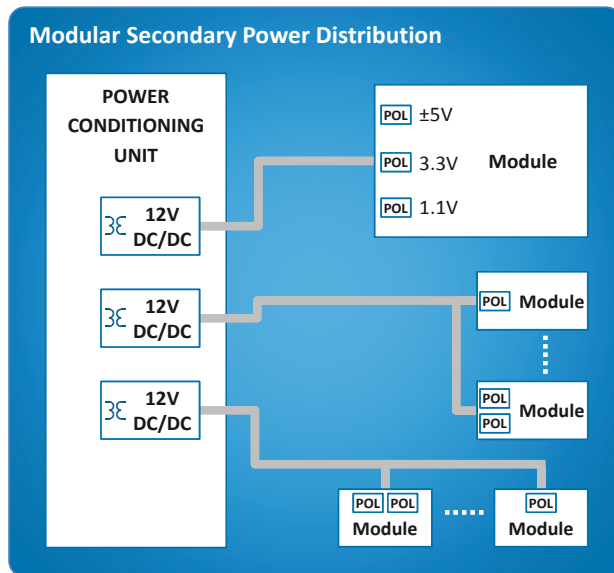


Easy Applicable POL Converters for High Efficiency and Re-Use

POWER ARCHITECTURE

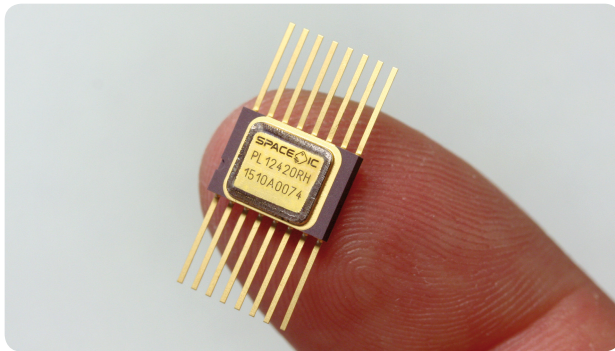


The evolution of power distribution in spacecraft goes into direction of modular architecture. Especially secondary power distribution from the satellite bus to the modules can be made more efficient by applying modular design.

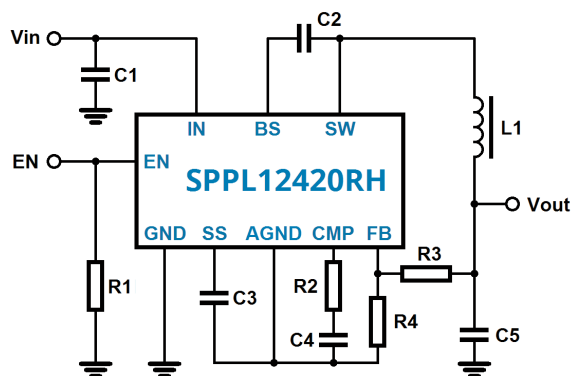
For this, easy applicable solutions for local power conversion are needed, which can deliver exactly the required voltages and currents to the load and can be directly integrated into the power consuming modules. Such approach makes the single modules easy re-usable. It can be realised using SPACE IC integrated point-of-load (POL) converters.

SPACE IC POL SOLUTION

- Monolithic IC (ESCC9000)
- Only few passive external components
- Radiation-hard, hermetic flatpack 16
- 2 A continuous output current
- 4.5-24 V input voltage capability
- 0.923 V min. output voltage
- Latch-up immune (SOI technology)
- Made in Germany - ITAR/EAR free



EASY APPLICABLE



BEST EFFICIENCY

